



Michigan's Response to *Listeria monocytogenes* in Out-of-State Grown Peaches

06/11/2024

Brandon Nader, Microbiology Manager

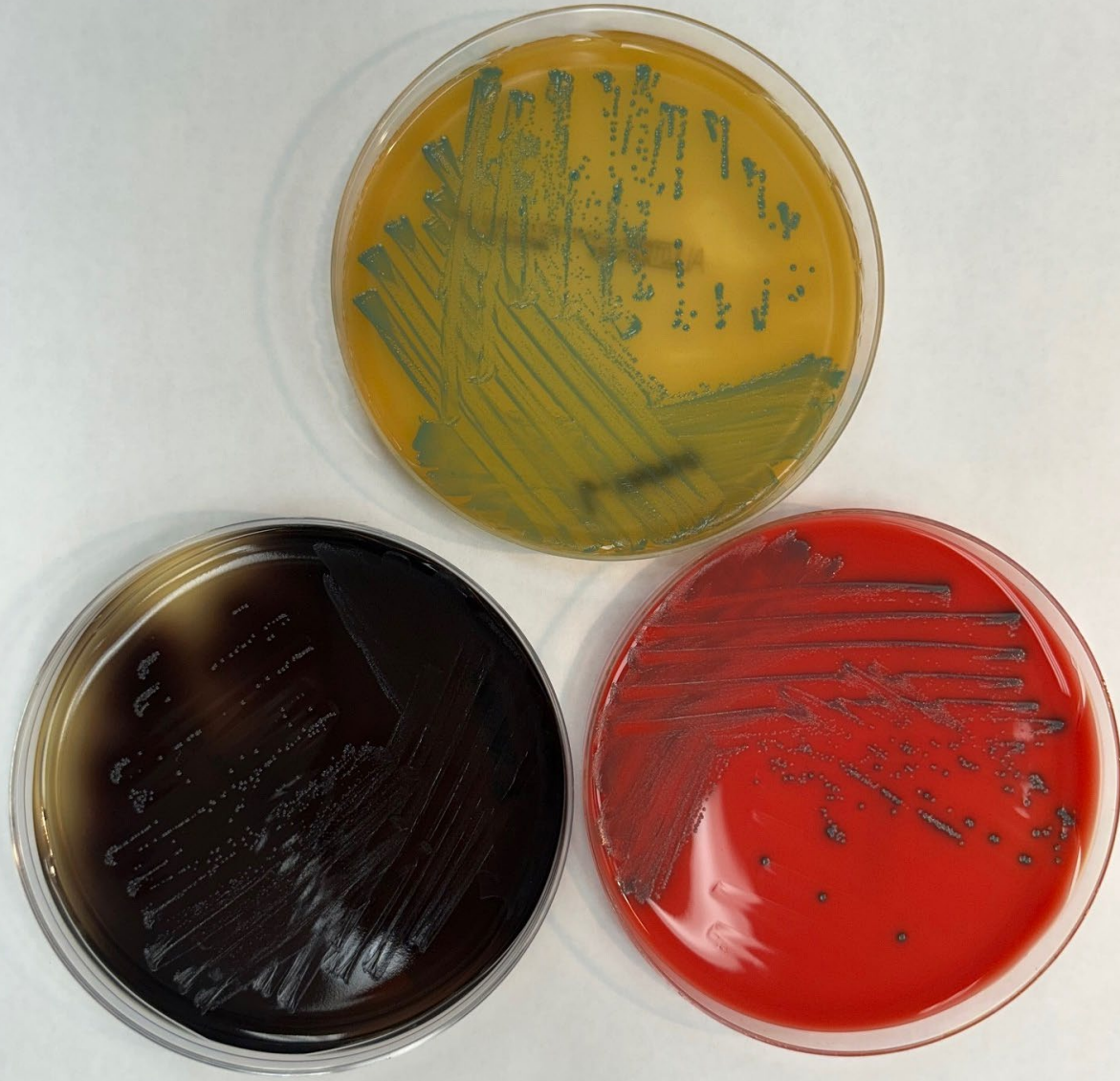
Lauren Edwards, MPH Rapid Response Team Epidemiologist

Michigan Department of Agriculture and Rural Development
Association of Food and Drug Officials 2024 AEC



Sampling

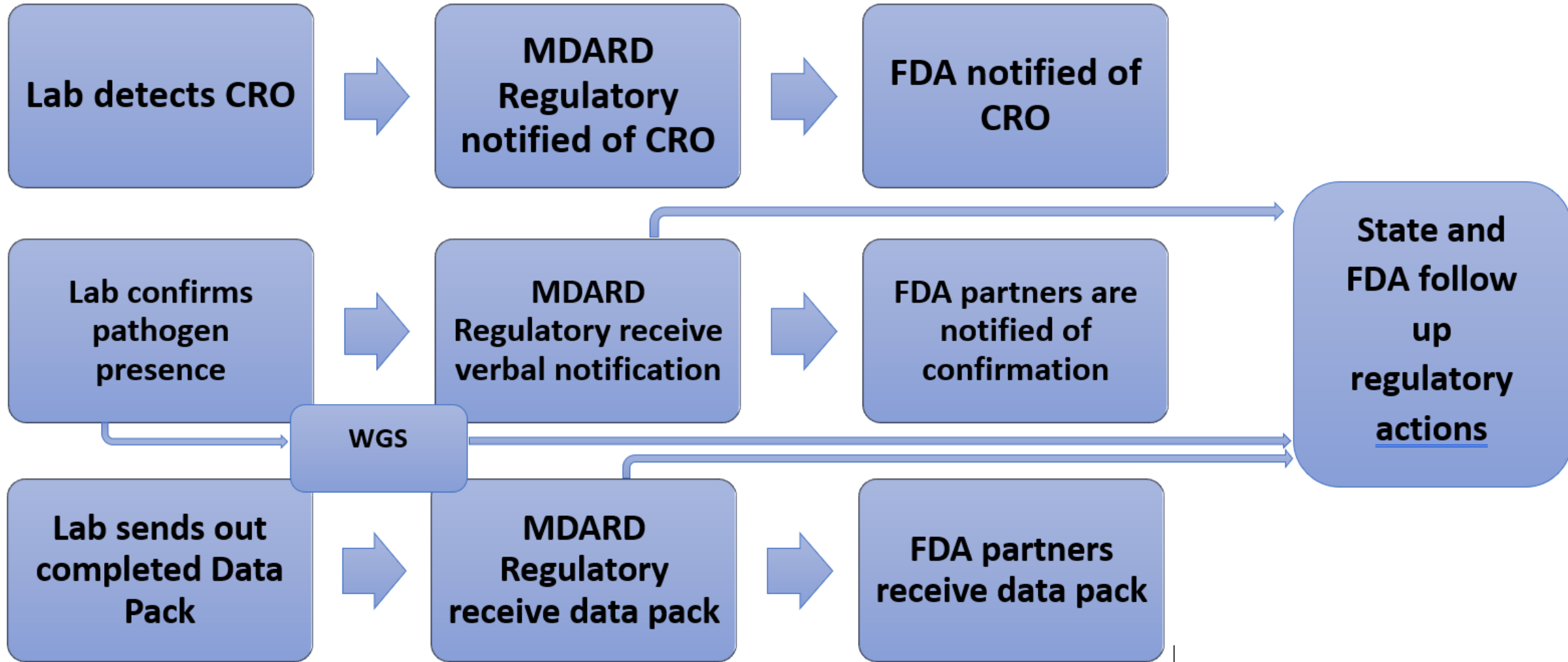
- LFFM Grant Year 2, MDARD was assigned the Hazard-Commodity Pair of peaches to be tested for presence of Salmonella species and Listeria monocytogenes
- Peaches were collected from distribution centers by the case and tested by the MDARD Geagley laboratory



Testing

- Samples were enriched and incubated per method requirement
- BioMerieux VIDAS[®] assay is used for screening.
- Following a positive screening result a cultural and/or biochemical confirmation is performed.
- Isolates taken to partners at Michigan Dept. of Health and Human Services for WGS and upload to PulseNet

Flow of Information



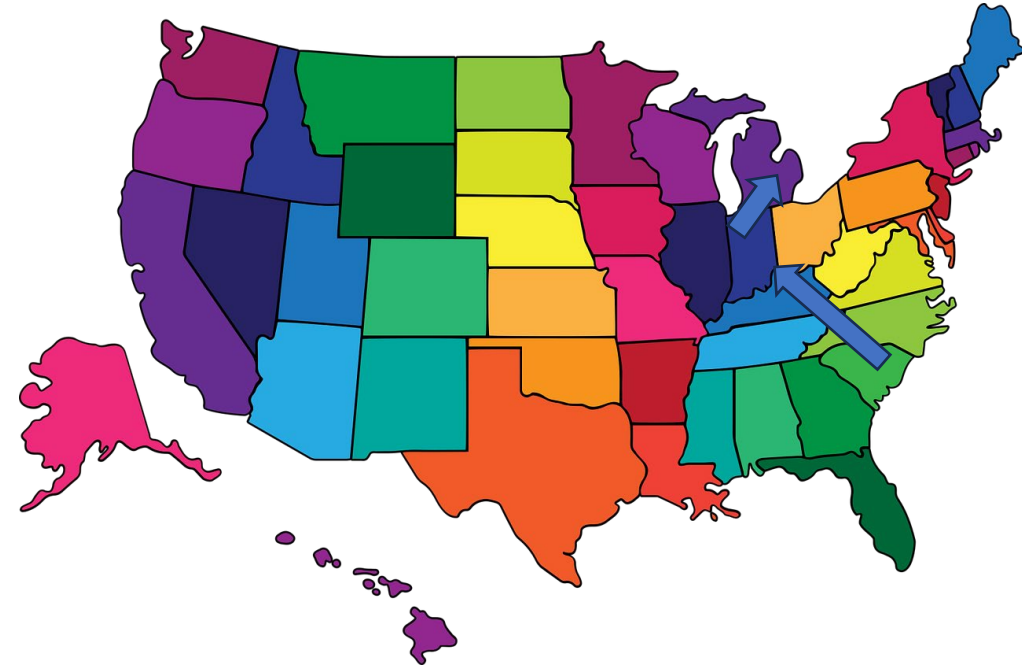


Michigan RRT Response - Partner Notification

- MDARD Geagley Laboratory notifies MDARD staff that the peach sample has been confirmed positive for the presence of *Listeria monocytogenes*.
 - RRT staff notify FDA and South Carolina Department of Agriculture (SCDA) of the results.
- Regional food staff contact **Retailer G** to notify them of the results and request distribution and invoice information.
- Approximately 40 cases are seized and secured by **Retailer G** in their warehouse.
- MDARD discusses a potential recall of the product and notification of consignees with **Retailer G**
 - **Retailer is reluctant to recall product without direction from supplier**

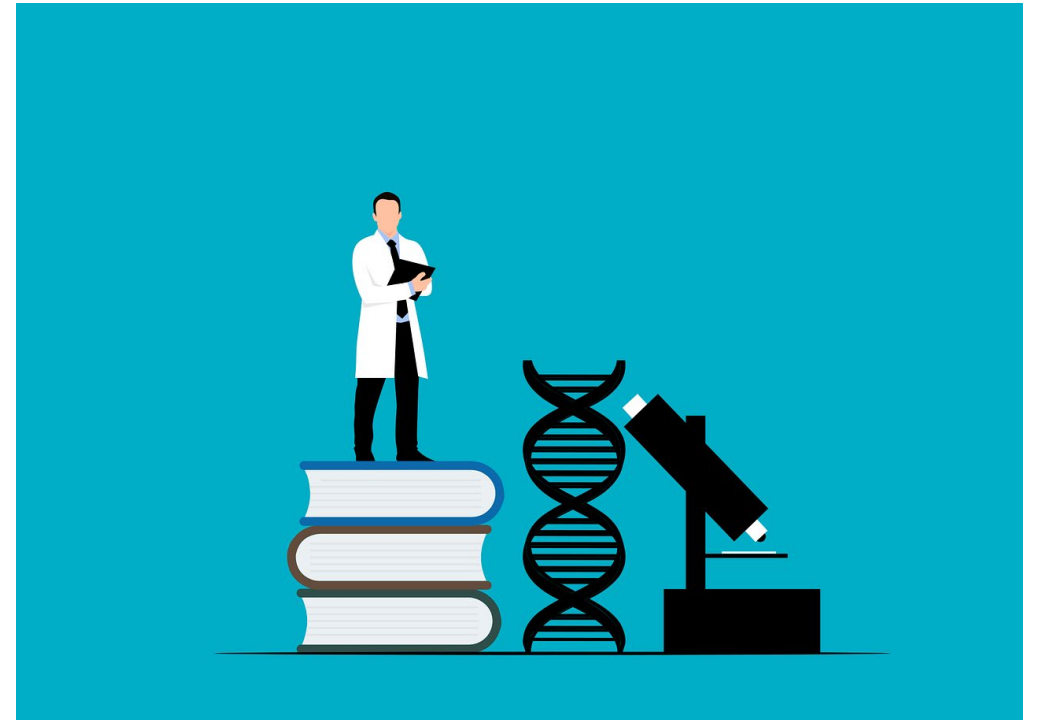
Michigan RRT Response- Partner Collaboration

- MDARD requests a call with SCDA officials to:
 - Brief on situation
 - Determine next steps
 - provides official sample results and documents
- The SC packer, **Packer J**, states that all the peaches in the shipment were shipped through a distributor, **Distributor C**, in IN. The MDARD laboratory issues the laboratory data pack, which was provided to FDA.
- The next day **Retailer G** initiates a recall of the product using the case code of “18” and initiates notification of each of their consignees.
- Michigan RRT begins compiling distribution information for the peaches, indicating the implicated product was primarily sent to schools and adult care facilities.
- A call is held with IDOH to brief them on distributor (**Distributor C**) involvement in their state.



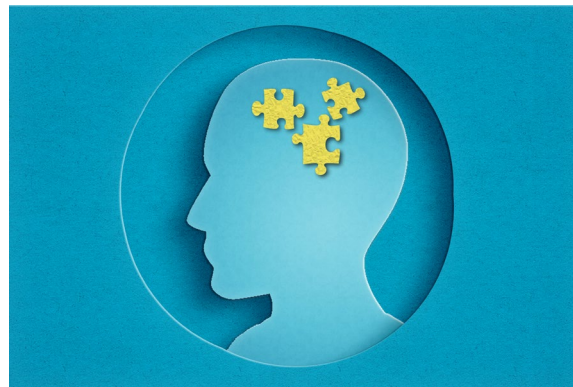
Michigan RRT Response - WGS and Partner Follow Up

- The two peach isolates are indistinguishable with wgMLST (whole genome multilocus sequence typing).
 - No matches within 35 wgMLST alleles were found in the MI or national databases.
- Potential for exposure by vulnerable populations
 - MDARD provides relevant distribution lists and **Retailer G's** recall notification to IL, IN and OH officials and MI local health departments.



RRT - Main Takeaways and Lessons Learned

- Unobstructed communication flow between lab and RRT can improve response efforts
- Establishing key points contact (or at least where to find them) prior to a response makes for smoother collaboration
- Including field staff in coordination and update calls allows for real-time updates





Thank you!

