

Packaged and Canned Food Defect Guidelines



Not Acceptable



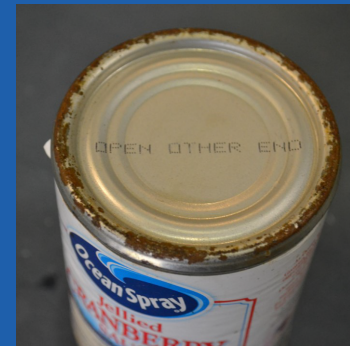
False seam with loss of hermetic seal



Metal touching metal/
crimped over



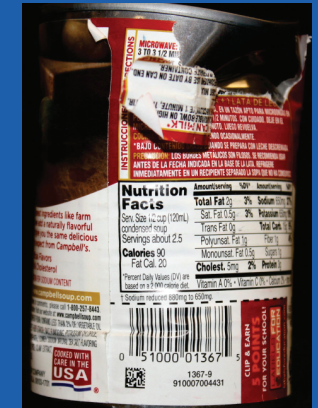
Open or torn packaging



Excessive rusted end



Rim Damage



Severely dented



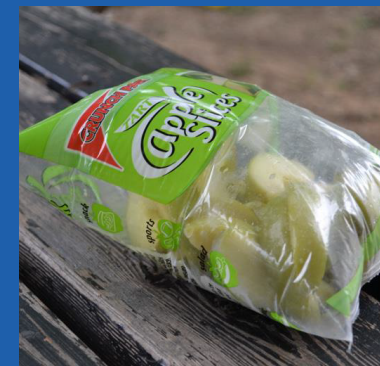
Severe double seam dent
plate fracture



Excessive and pitted rust



Severely dented



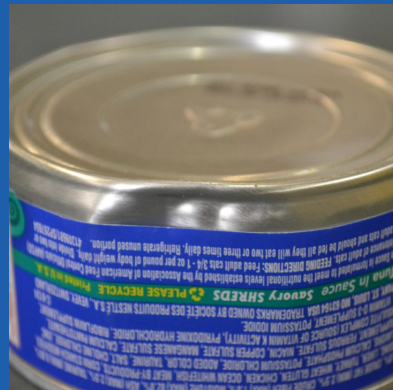
Puffy packages



Swollen Can



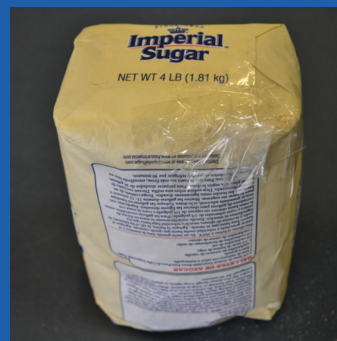
Torn inner package



Dent on Seal



Puffy and bulging container



Open and ripped bagged
that has been taped



Puffy packages



Severely dented



Open box with no
inner seal

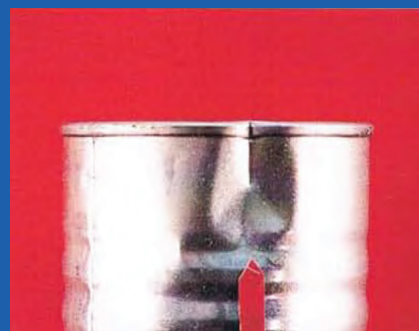


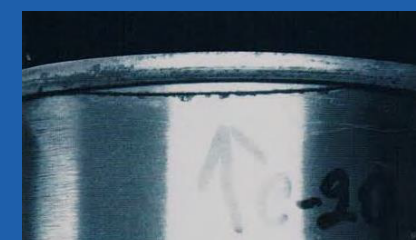
Plate fracture in double
seam or can body



An opening below the double
seam or plate fracture



Missing Label



Knocked down flange



Severely dented



Missing ingredient labels

Contact AFDO
717.757.2888
afdo@afdo.org

2021