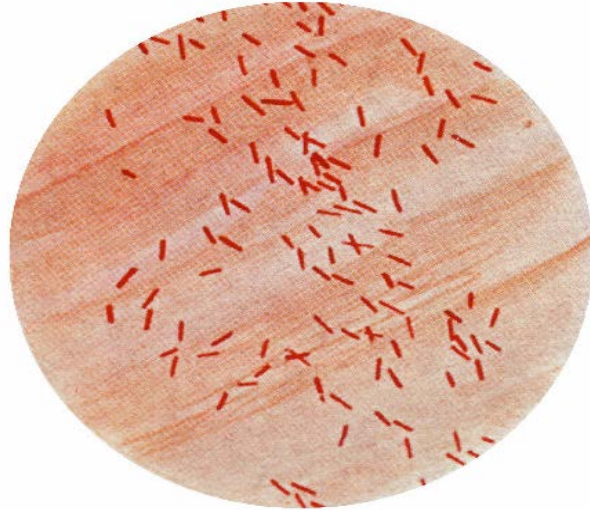




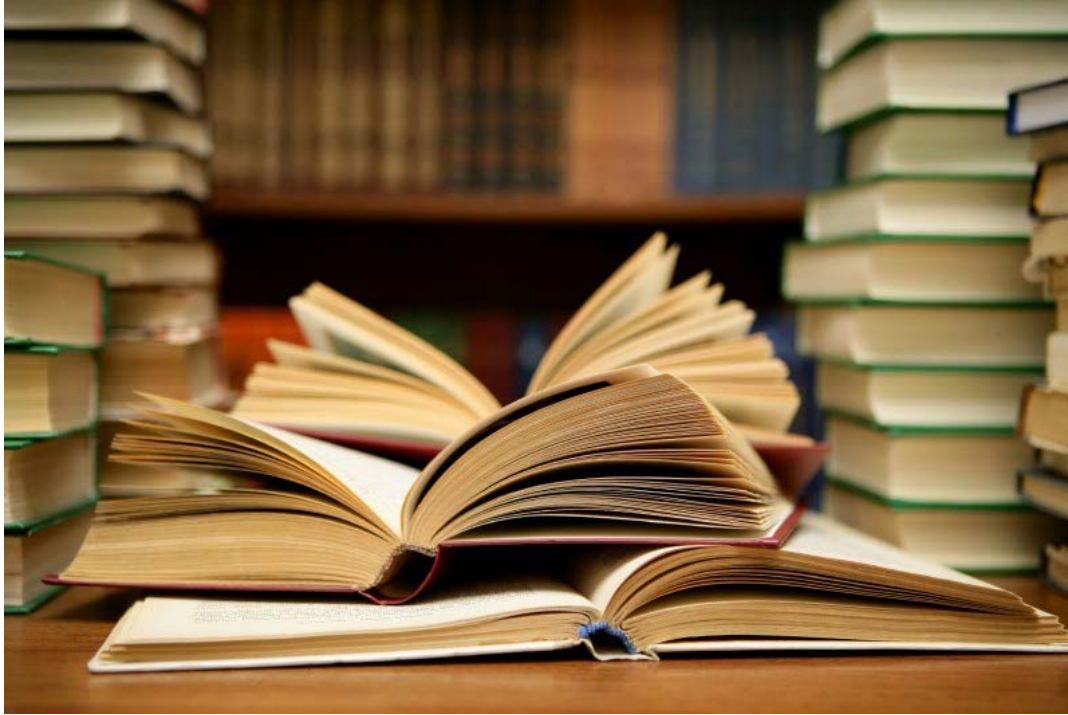


**“I hear and I forget.
I see and I remember.
*I do and I understand.”***

Hands-on training



Literature





- 10 pavilions

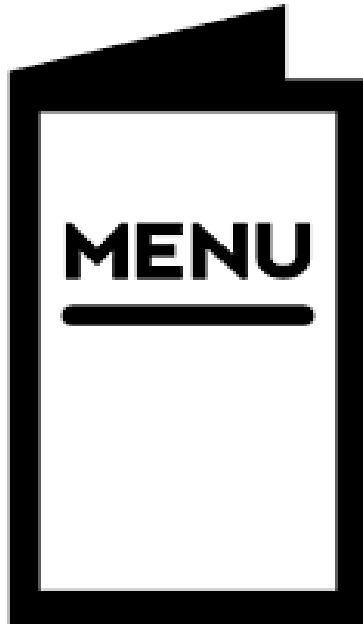


Folklorama



SURVEY

The word "SURVEY" is displayed in a stylized, hand-drawn font, where each letter is cut out from a separate piece of paper. The letters are arranged horizontally on a light brown corkboard. Each letter is secured to the board by a single pushpin. The colors of the pushpins are: red for 'S', blue for 'U', white for 'R', yellow for 'V', green for 'e', and red for 'Y'. The letters themselves are: 'S' is black on white paper; 'U' is red on white paper; 'R' is white on black paper; 'V' is grey on white paper; 'e' is red on white paper; and 'Y' is black on white paper.



Process

- Product purchased from an approved source frozen that was pre-made and pre-cooked. Product placed in freezer on-site.

Process

CCP

- Frozen product placed in boiling water, covered, and cooked for 3-4 minutes. Water drained via colander. Internal temperature of the Pelmeni must be at or above **74°C (165°F)**. Re-heating provides an adequate reduction of vegetative cells to safe level.

Process

CCP

- Pelmeni immediately placed on steam table, covered, and held at or above **60°C (140°F)** to prevent the growth of pathogenic bacteria. Verify hot holding unit is functional with a digital tip sensitive thermometer.





Pilots



Hands-on FST











Survey from participants

- *“By moving around I retained information by thinking back visually to what happened in that corner...”*



Principle of consistency and commitment



Principle of Social Norm



Rob Mancini

robert.mancini6@gmail.com

204.885.0638